

# CASE STUDY

## Peace Marsh Completes biomass boiler installation for Augustinian Care



### Project Summary & Benefits

The project is another success of the Peace Marsh 1-2-3 Total Renewable Energy Service offered to our commercial and large residential private clients. When we initially assessed all four of the Augustinian Care homes St Raphael's was consuming over £60,000 per year on oil! When we completed our full renewable energy appraisal we reported to our client that they could save nearly half this fuel bill AND achieve £28,000 per year cash income from the Governments 20 year RHI scheme. This achieves a 20% ROI and a payback in 5-6 years.

### Funding

Peace Marsh arranged an unsecured loan from Siemens Carbon Trust for the total supply and installation costs including the plant room build, controls and zoning upgrade.

### The Project

Peace Marsh scoped the total requirement including the new plant room, boiler sizing and controls. We managed the bid process and jointly consulted and agreed



Before



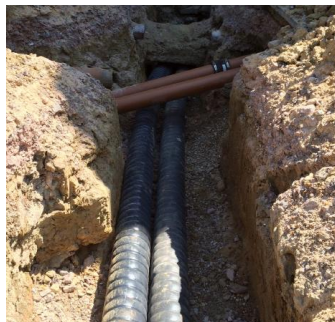
After

with our client the best installers and equipment for the job. This included 400 kW biomass wood pellet boilers (1 x 250 kW plus 1 x 150 kW Froling boiler) together with LPG

backup boilers, 2 x 12 tonne pellet silos, plate heat exchangers and upgrades to the BMS and zoning to improve the care home comfort levels. The whole project was completed during the summer when demand was at its lowest and as the final connection was completed in a few hours in one day the residents were unaware of any change.



Heat Exchangers



District Pipe Work



Biomass Boiler Plant

### About Augustinian Care

The Sister of St. Augustine, Mercy of Jesus, were founded 1842 in Bruges by Canon Peter John Mayes, he was a great advocate of the mentally ill. Augustinian Care provides care with nursing for elderly frail residents and those with mental health problems in Sussex.

### About Peace Marsh

Peace Marsh are independent Renewable Energy Experts who manage energy saving and renewable energy projects from inception to completion. We scope, report, present financial cost benefits, manage supplier bids, project manage installations and complete the Government tariff applications to ensure predictions match actual savings and financial projections. We have completed many projects and we would be pleased to arrange visits to any of our client's sites.

For further information please contact:

**Andrew McBean t: 01483 306688 e: [andrew@peace-marsh.co.uk](mailto:andrew@peace-marsh.co.uk)**